

ARMORY GALLERY FACTSHEET



TABLE OF CONTENTS

INTRODUCTION	3
BACKGROUND	3
BUILDING 18 CONFIGURATION AND INCLUSIONS	4
ARMORY GALLERY FLOORPLAN	4
ARMORY GALLERY EQUIPMENT SCHEDULE	5

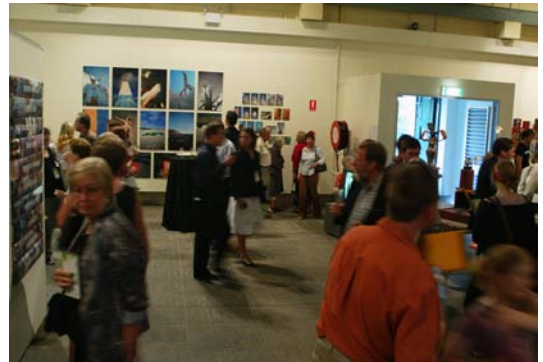
ARMORY GALLERY

Introduction

The Armory Gallery, located in Building 18 at the northern end of the Armory, is a WWII explosives storehouse that was adapted for re-use in 2004. It is now a flexible, 500sqm exhibition space with a maximum audience capacity of 450 people. The facility is intended for visual art exhibitions, natural history exhibitions and heritage displays. As a fully operational gallery space, the Armory Gallery offers unique opportunities for hirers as a venue for film and photographic shoots and a setting for corporate functions



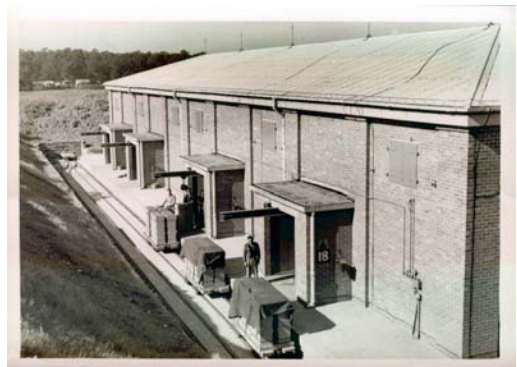
The gallery is fully accessible and features the largest continuous gallery wall in Australia (c. 38m x 3.5m), and contains plenty of free-standing mdf display panels and exhibition furniture that can be re-arranged into different configurations. Fixed wall space (for hanging and projection) equals c. 310sqm. The space is serviced by an exhibition track lighting system equipped with c. 100 luminaires ('barn door' wall washes and spot/profiles). AV equipment includes 7 x DVD players, 5 x Flatscreen TVs, 1 x Plasma Screen, 5 x Data Projectors, 1 x audio system and 1 x high end graphics-enabled PC. All of the perimeter walls are fitted with hanging track.



Background

Originally used as an Explosive Storehouse in the Royal Australian Naval Armament Depot, Newington (RANAD) - Building 18 was designed in 1938 and constructed 1940-1941. Surrounded by an earthen traverse designed to contain and direct explosive blasts upward, it demonstrates the Australian design response to blast containment.

It is situated at the Northern end of RANAD in an expanse of open grass on the edge of the wetlands. This position on the outer limits of flat firm ground close to the wharf demonstrates the pressing need for expansion of facilities in the lead up to WW2. Building 18 was connected to the Armory's light rail system by a narrow gauge railway spur line. Rail and pedestrian access is provided through a reinforced concrete tunnel.



Building 18 provides one of the largest examples of the explosive storehouses constructed during early WW2. It is approximately 500 square metres and consists of one large storage chamber accessed by 3 (originally 4) doors, each protected by small brick porches. The building has a steel and timber frame, with brick walls and a hipped roof. The gritless asphalt-covered concrete floor features wooden load-bearing battens and bears the scars of over sixty years use. This floor was designed to absorb impact and resist sparks to lessen the likelihood of damage and explosion in the event of ordnance being dropped. Also aimed

at minimising sparks – the timber doors and window shutters were sheeted in copper and earthed, and there were several lightning conductors along the roof.

The two interior overhead gantry cranes can lift 508kg, and were used for lifting and pyramid stowage of heavy naval ordnance to a height of about 2 metres. The beams (“cats heads” in Navy jargon) protruding through the building’s doorways were fitted with chain blocks and used to unload the rail wagons. All the gantries are still operational and are now used to assist with exhibition set up and display.

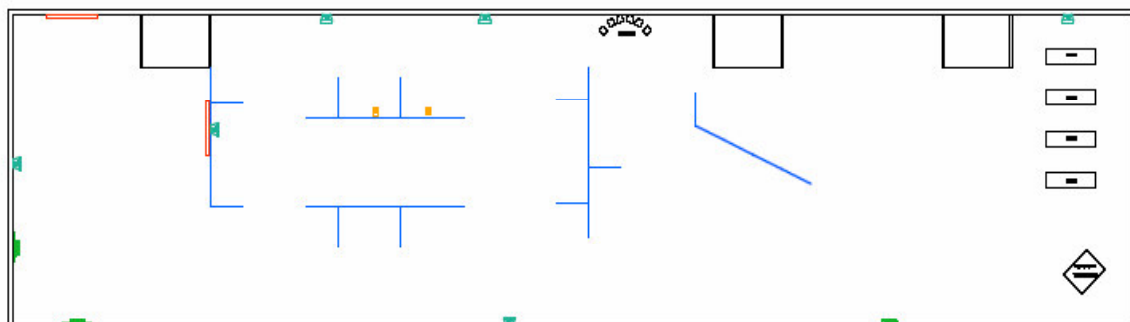


BUILDING 18 CONFIGURATION AND INCLUSIONS

Item	Quantity	Location
Display panels	c. 30 reconfigurable mdf panels	Inside Gallery
Running water & kitchenette	2	Inside Gallery and in adjacent amenity block annex
Fridge	1	Inside amenity block
Caterer’s Workspace	1	Small kitchenette in amenity block annex
Power	2 x three phase 20 amp and c. 30 x single phase GPO’s	3 phase – north western wall; single phase – all walls and BOH
Audio Visual	See Equipment Schedule	
Toilet/Disabled toilet	2 (both disabled access)	Amenity block
Access Ramp	1	Outside gallery

ARMORY GALLERY FLOORPLAN

(note: all locations of interior panels subject to change from exhibition to exhibition)



SYDNEY OLYMPIC PARK - ARMORY GALLERY EQUIPMENT SCHEDULE

Description	Quantity
BenQ Data Projectors	5
Samsung Flatscreen TVs (2 x 52cm & 3 x 63cm)	5
Samsung Plasma TV (42 inch)	1
High end graphics-enabled PC	1
Samsung DVD Players	5
Samsung Audio Home Theatre DVD Player	2
Exhibition lighting (combination of barndoor wall washes and profile spots)	c. 100 luminaires
Hanging Track (with hooks)	c. 80 metres