

ARMORY THEATRE FACTSHEET



TABLE OF CONTENTS

INTRODUCTION	3
BACKGROUND	3
BUILDING 22 CONFIGURATION AND INCLUSIONS	4
ARMORY THEATRE FLOORPLAN	5
SYDNEY OLYMPIC PARK - ARMORY THEATRE EQUIPMENT SCHEDULE	6

ARMORY THEATRE AND OUTDOOR PERFORMANCE SPACE

Introduction

The Armory Theatre, located at Building 22 at the heart of the Armory, was a non-explosives storehouse that has been adapted for re-use. It is now a flexible, multi-purpose performance space with a maximum audience capacity of 250 people. The facility is intended for small-scale theatrical performances; musical concerts; rehearsals, public lectures; seminars; courses; conferences; community meetings; presentations; launches; film screenings and arts/cultural workshops.



The venue is fully accessible and has a modular adjustable stage comprised of 15 individual units that can be set up in multiple configurations. The building has been fitted out with: a flexible lighting rig which covers the entire main floorspace; 210 seats (which can be fixed in rows); and a back-of-house area with dressing rooms, kitchenette and fully accessible bathroom. The new public entry on the southern façade provides ramp access and includes a foyer under a simple canopy.



Building 22A – Outdoor Stage

The Outdoor Stage can be used for performances, concerts, presentations, and as a focal point for community events and celebrations. It faces onto a naturally sloping amphitheatre that can accommodate an audience of c. 3,000 pax in 'picnic mode.'

The stage is shaded and is approximately 12 metres x 10 metres — large enough to accommodate a 60-piece orchestra. Its position adjacent to Armory Theatre gives access to the back-of-house facilities and technical facilities to support performances and presentations.

The stage and its grassy amphitheatre also provides an outdoor gathering place for the appreciation of Newington Armory's cohesive cultural heritage landscape.

Background

Building 22 is located at Five Ways on Burma Road situated in the area designated as the Original Establishment precinct of Royal Australian Naval Armament Depot, Newington (RANAD). RANAD contains within its structures, infrastructure and other elements from the establishment and development of the Armament Depot from 1897 to the early decades of the 20th century. Building 22 was constructed in the early to mid 1920's and was originally used as a non-explosives storage facility. Like all storehouses at RANAD, it was built on level ground with level access provided for the light rail.



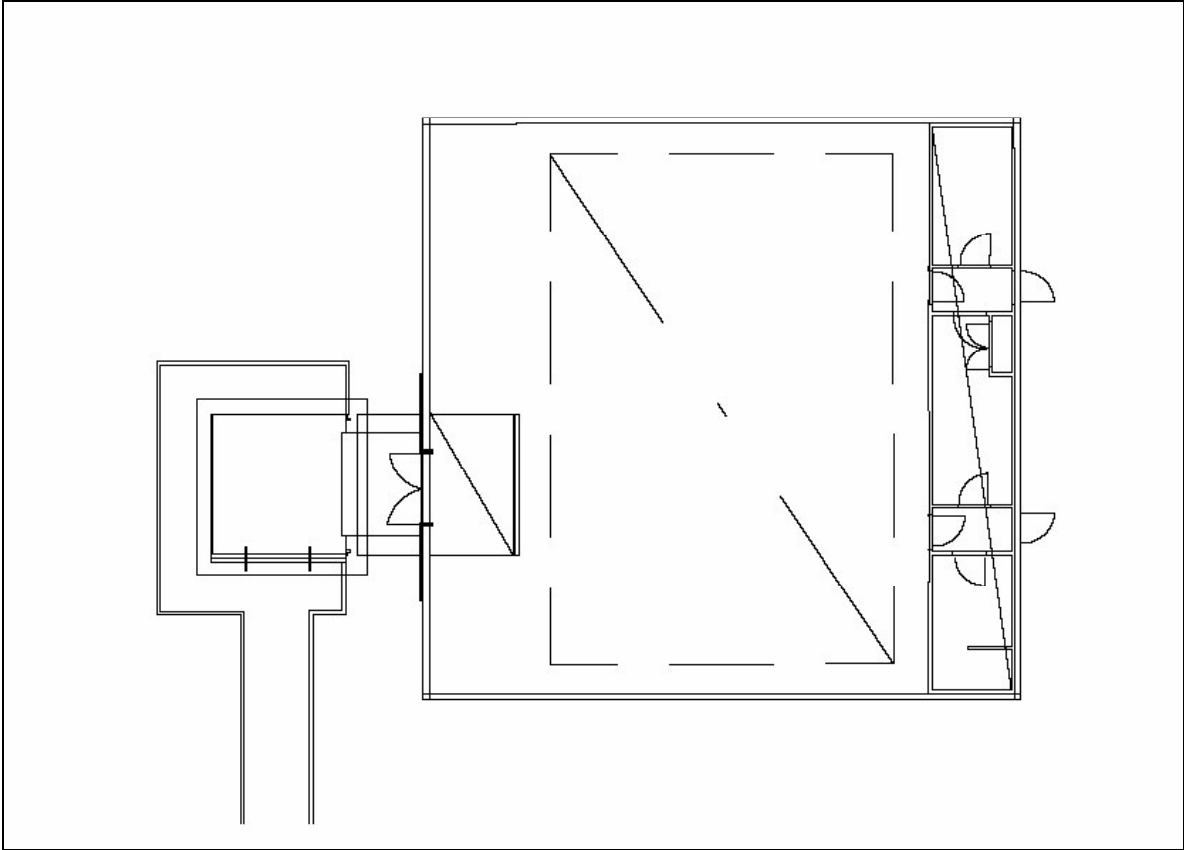
This large simple form of approximately 300 sq metres is a timber frame clad in corrugated galvanised iron. The gable roof is clad in corrugated asbestos cement, which has been encapsulated by the application of a paint system. The main entrance was through a timber double door, and the rail tracks pass by this entrance. The floor is wooden with a central concrete track (plinth). The steel checker plate is a recent addition (early 1990's) to cover crumbling concrete. It is one of only 3 buildings on site with a fire sprinkler system. The wooden floor, plus the absence of purpose specific detailing, lightning resistant technology and blast containment siting/earthworks attests to its use for non-explosive goods, such as packaging pieces, labels and paper gaskets etc. Its final use was for pyramid stowage of empty 76mm cartridge and 5"/54 charger propelling storage tanks.



BUILDING 22 & 22A CONFIGURATION AND INCLUSIONS

Item	Quantity	Location
Chairs	210 – can be fixed in rows	Inside auditorium
Tables	3	Inside auditorium
Water/Sink/Shower	Hot and cold running water available	Kitchenette and Bathroom in BOH
Fridge	1	Inside auditorium
Kitchen/Caterer's Workspace	1	Kitchenette
Power	4 x three phase 32amp and 30 x single phase GPO's	3 phase – western and northern walls; single phase – all walls and BOH
Audio Visual	See Equipment Schedule	
Shower/Disabled toilet	1	Bathroom
Green/Change Room	2	BOH
Tarquette for outdoor stage	1 x 120sqm	Cage inside Bldg 22
Ramp (for use with outdoor stage)	2	Cage inside Bldg 22

ARMORY THEATRE FLOORPLAN



SYDNEY OLYMPIC PARK - ARMORY THEATRE EQUIPMENT SCHEDULE

Description	Quantity
Professional data projector 2500 ANSI Lumen XGA Native 800:1 contrast. Digital keystone Vertical and horizontal. Hitachi CP-X440W Latest model	1
Heavy-duty professional tripod projector screen; 234cm x 234cm viewing surface with special heavy duty frame and fittings. Draper DiplomatR	1
Profile spot 650 watt condensor zoom profile spot complete with colourframe and set of four shutters - 20-40 degree LDR Suono 2040 A10603030	2
Lamp for above Class T27 250v 650w	2
Fixtures for general stage wash HPL PAR fixture, 575w hi efficiency PAR luminaire complete with 4 interchangeable lenses - spot and flood, plus colour frame Kupo Multipar575	6
Barn door set for Multipar 575	6
Lamp for above HPL575 axial	6
Compact short throw follow spot 250watt MSD arc source, Zoom, Iris LDR Canto250MSD 10207080	1
Colour changer magazine to suit above A20105002	1
Stand to suit above, Budget copy of Manfrotto 070 follow spot stand with western leg KUPRIG 300	1
Lamp for above MSD/HSD250	1
Hook Clamp 2" bar to bolt for profiles and PARs KUPRIG 050	8
Safety wire HEAVY DUTYswaged steel secondary safety wire for profiles and PARs KUPRIG110	8
Bolt set for clamps on HPLs and PARs	8
Lighting Console 24 Control Channels, 2 presets, LSC Maxim/S - see attached brochure	1
DMX control cable console top wall plate 10M 5 pin MXLR-5 pin FXLR	1
Self powered 300 watt moulded 12" and horn speaker system Quest QSA300	4
Budget Speaker stands to suit above ATC303	4
Soundcraft Spirit FX16 - 16 mono mic/line plus 4 stereo input 16/2/2. 4 aux sends onboard <u>Lexicon</u> digital reverb effects processor	1
Budget dual 1/3 octave graphic EQ McLelland GE62	2
1M balanced patch cables for internal wiring of rack	4
30M 16 input/4 return high quality USA manufactured with Alden cable and Neutrik connectors	1
General vocal Mic Hi Quality Supercardioid dynamic Sennheiser e845	2
Condensor instrument mic cardioid high quality Sennheiser e614 - supersedes 664 also suitable for choir and conference table mics	2
Lectern microphone Shure MX418S Supercardioid high quality gooseneck condensor mic for use on Lectrum or similar lecterns	1
20M black 10 amp mains cable with moulded connectors Lead 20	4
9 Metre budget mic cables used for mics and signal feed to powered speakers AMIS	16
Tall Boom Mic stand	6
Short boom mic stand	4
Combo CD player CD recorder, 2 drawer marantz CDR510	1
Portable case with space for mixer in top of case and 6RU of space under for processing and playback	1

* the Authority's preferred supplier of Technical services (set up sound and lighting) for this venue is *Small Systems PA Hire* Phone: 02 9584 9999; Contact: Chris Clough; Baseline cost: \$55 per hour + transport costs. This firm is also the preferred supplier for 'scaling up' both the audio and lighting equipment within the venue.